



AlumaView_® powdercoat painted RAL# 6004



ARMORBRITE™

For an attractive appearance with exceptional durability, ArmorBrite finishes give you design flexibility while also protecting your investment. You can count on uniform coverage and a smooth, long-lasting finish that outperforms any field-applied coatings for corrosion resistance and color retention. All 187 finishes are available with quick turnaround time and are available for several door models and door model components. Ask your Authorized Raynor Dealer for full details regarding availability.



TC300 powdercoat painted RAL# 3020 (red door only)

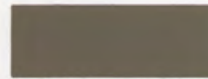
 RAL 1000 49/15200	 RAL 1019 49/13660 • 38/15019	 RAL 2008 49/24340	 RAL 3014 49/31080	 RAL 4008 49/32280	 RAL 5014 49/42320
 RAL 1001 49/15190 • 38/15001	 RAL 1020 49/22500 • 38/20020	 RAL 2009 49/24360	 RAL 3015 49/33670	 RAL 4009 49/34740	 RAL 5015 49/42330
 RAL 1002 49/22590 • 38/20002	 RAL 1021 49/22280	 RAL 2010 49/24520	 RAL 3016 49/31980	 RAL 4010 49/40490	 RAL 5017 49/40760 • 38/4001
 RAL 1003 49/22580	 RAL 1023 49/22490 • 38/20023	 RAL 2011 49/24580	 RAL 3017 49/31060	 RAL 5000 49/42200	 RAL 5018 49/41140 • 38/40020
 RAL 1004 49/22570 • 38/20004	 RAL 1024 49/22480	 RAL 2012 49/24690	 RAL 3018 49/31050	 RAL 5001 49/42210	 RAL 5019 49/42360 • 38/40019
 RAL 1005 49/22560	 RAL 1027 49/22470	 RAL 3000 49/33120	 RAL 3020 49/31040	 RAL 5002 49/42220	 RAL 5020 49/44270 • 38/40018
 RAL 1006 49/22550	 RAL 1028 49/22460	 RAL 3001 49/31120	 RAL 3022 49/33700	 RAL 5003 49/42230	 RAL 5021 49/41190 • 38/40021
 RAL 1007 49/22540	 RAL 1032 49/22450	 RAL 3002 49/31110	 RAL 3027 49/33660	 RAL 5004 49/42240 • 38/40004	 RAL 5022 49/42390
 RAL 1011 49/15180	 RAL 1033 49/22240	 RAL 3003 49/31100	 RAL 3031 49/34730	 RAL 5005 49/43190	 RAL 5023 49/44650
 RAL 1012 49/22530	 RAL 1034 49/23910	 RAL 3004 49/33900	 RAL 4001 49/43160	 RAL 5007 49/42250 • 38/40007	 RAL 5024 49/44660
 RAL 1013 49/11280 • 38/10013	 RAL 1037 49/20096	 RAL 3005 49/31900	 RAL 4002 49/31030	 RAL 5008 49/42260 • 38/40008	 RAL 6000 49/53160 • 38/50001
 RAL 1014 49/15170 • 38/15014	 RAL 2000 49/24570	 RAL 3007 49/31910	 RAL 4003 49/32270	 RAL 5009 49/42270	 RAL 6001 49/52900 • 38/50005
 RAL 1015 49/15320 • 38/15015	 RAL 2001 49/24560	 RAL 3009 49/31920	 RAL 4004 49/31020	 RAL 5010 49/42280	 RAL 6002 49/52890
 RAL 1016 49/22520 • 38/20016	 RAL 2002 49/24550	 RAL 3011 49/31090	 RAL 4005 49/42780	 RAL 5011 49/43180 • 38/40011	 RAL 6003 49/52880 • 38/50003
 RAL 1017 49/22510	 RAL 2003 49/24540	 RAL 3012 49/31940 • 38/30012	 RAL 4006 49/32090	 RAL 5012 49/43170	 RAL 6004 49/50980 • 38/50004
 RAL 1018 49/21830	 RAL 2004 49/24530	 RAL 3013 49/31950	 RAL 4007 49/32540	 RAL 5013 49/42310 • 38/40013	 RAL 6005 49/50670 • 38/50002



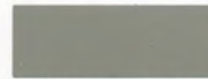
RAL 6006 49/52870 • 38/50006



RAL 6022 49/52690 • 38/50022



RAL 7006 49/72580 • 38/70006



RAL 7030 49/72890 • 38/70027



RAL 7045 49/77890 • 38/70045



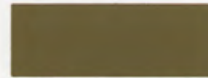
RAL 8019 49/65490 • 38/60019



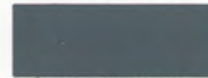
RAL 6007 49/52860 • 38/50007



RAL 6024 49/52680



RAL 7008 49/72570



RAL 7031 49/72520 • 38/70031



RAL 7046 49/72010 • 38/70002



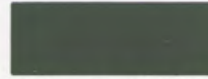
RAL 8022 49/63080 • 38/60022



RAL 6008 49/53240 • 38/50008



RAL 6025 49/52670



RAL 7009 49/72770 • 38/70009



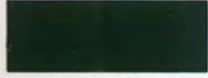
RAL 7032 49/72910 • 38/70001



RAL 7047 49/72020 • 38/70047



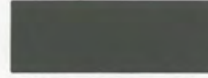
RAL 8023 49/66070 • 38/60023



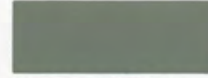
RAL 6009 49/52840 • 38/50009



RAL 6026 49/52660 • 38/50026



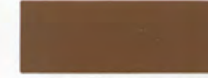
RAL 7010 49/72560 • 38/70014



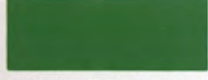
RAL 7033 49/72510 • 38/70033



RAL 8000 49/66170



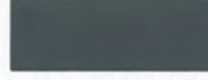
RAL 8024 49/66060 • 38/60024



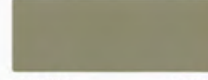
RAL 6010 49/52830 • 38/50031



RAL 6027 49/50990 • 38/50027



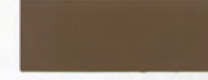
RAL 7011 49/72790 • 38/70011



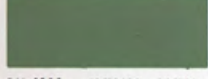
RAL 7034 49/72500



RAL 8001 49/66160 • 38/60005



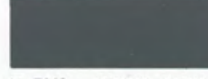
RAL 8025 49/66050 • 38/60025



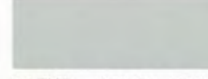
RAL 6011 49/52820 • 38/50011



RAL 6028 49/52650 • 38/50028



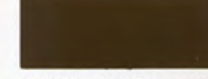
RAL 7012 49/71180 • 38/70012



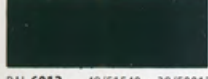
RAL 7035 49/73510 • 38/70035



RAL 8002 49/66150 • 38/60002



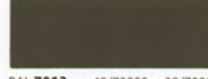
RAL 8028 49/66500 • 38/60028



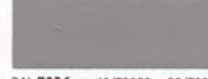
RAL 6012 49/51540 • 38/50012



RAL 6029 49/52640 • 38/50029



RAL 7013 49/72550 • 38/70013



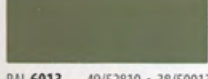
RAL 7036 49/72950 • 38/70036



RAL 8003 49/66140 • 38/60003



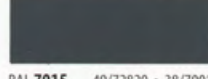
RAL 9001 49/10016 • 38/10001



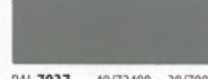
RAL 6013 49/52810 • 38/50013



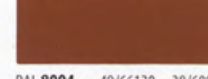
RAL 6032 49/52630 • 38/50032



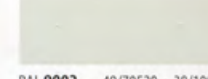
RAL 7015 49/72820 • 38/70015



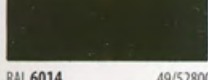
RAL 7037 49/72480 • 38/70037



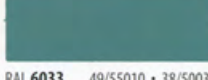
RAL 8004 49/66130 • 38/60004



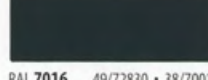
RAL 9002 49/70520 • 38/10002



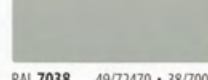
RAL 6014 49/52800



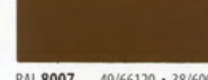
RAL 6033 49/55010 • 38/50033



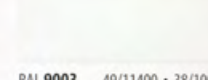
RAL 7016 49/72830 • 38/70016



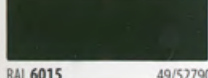
RAL 7038 49/72470 • 38/70038



RAL 8007 49/66120 • 38/60007



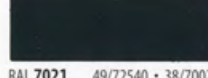
RAL 9003 49/11400 • 38/10003



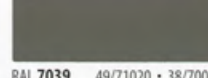
RAL 6015 49/52790



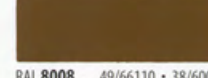
RAL 6034 49/55020 • 38/50034



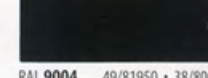
RAL 7021 49/72540 • 38/70021



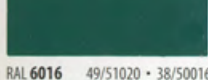
RAL 7039 49/71020 • 38/70039



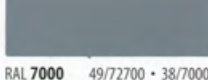
RAL 8008 49/66110 • 38/60008



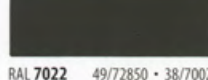
RAL 9004 49/81950 • 38/80004



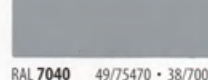
RAL 6016 49/51020 • 38/50016



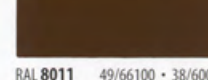
RAL 7000 49/72700 • 38/70000



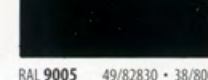
RAL 7022 49/72850 • 38/70022



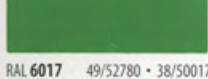
RAL 7040 49/75470 • 38/70046



RAL 8011 49/66100 • 38/60011



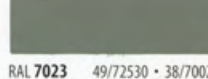
RAL 9005 49/82830 • 38/80010



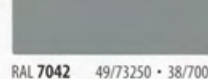
RAL 6017 49/52780 • 38/50017



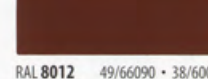
RAL 7001 49/72710



RAL 7023 49/72530 • 38/70023



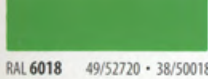
RAL 7042 49/73250 • 38/70042



RAL 8012 49/66090 • 38/60012



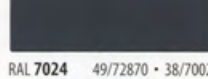
RAL 9010 49/11500 • 38/10004



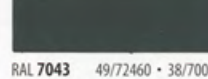
RAL 6018 49/52720 • 38/50018



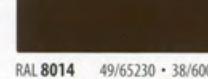
RAL 7002 49/72720 • 38/70007



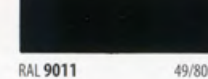
RAL 7024 49/72870 • 38/70024



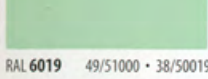
RAL 7043 49/72460 • 38/70043



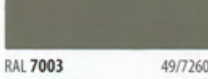
RAL 8014 49/65230 • 38/60010



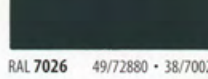
RAL 9011 49/80540



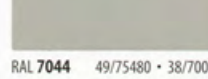
RAL 6019 49/51000 • 38/50019



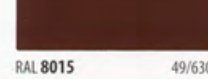
RAL 7003 49/72600



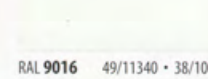
RAL 7026 49/72880 • 38/70026



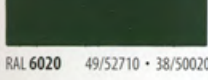
RAL 7044 49/75480 • 38/70044



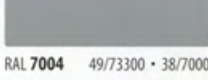
RAL 8015 49/63040



RAL 9016 49/11340 • 38/10010



RAL 6020 49/52710 • 38/50020



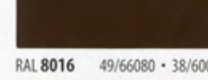
RAL 7004 49/73300 • 38/70004



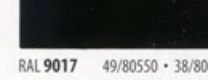
RAL 7028 49/72890 • 38/70028



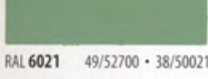
RAL 7045 49/77890 • 38/70045



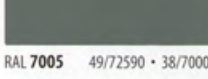
RAL 8016 49/66080 • 38/60016



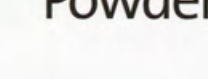
RAL 9017 49/80550 • 38/80017



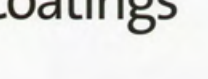
RAL 6021 49/52700 • 38/50021



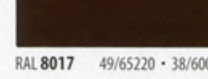
RAL 7005 49/72590 • 38/70005



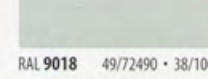
RAL 7030 49/72890 • 38/70027



RAL 7035 49/73510 • 38/70035



RAL 8017 49/65220 • 38/60017



RAL 9018 49/72490 • 38/10018

TIGER Drylac®
Powder Coatings

Series 49 (standard)

Weather Resistant TGIC Polyester Powder Coatings for Exterior and Interior Applications

Features: Good weather resistance, good mechanical properties, very smooth flow, good storage stability, good coverage.

Gloss Level: All colors featured in this chart are available as standard products in smooth glossy with a gloss level of 80-90+ (gloss level according to Garner 60 deg., ASTM D 523).

Typical Applications: Most residential and commercial doors.

For more details, visit www.raynor.com.

RAL

Having gained worldwide acceptance over the last few decades, the RAL is the most popular Central European Color Standard used today.

The RAL colors in this chart have been matched as closely as possible. Color chart production methods and influence from heat and light may account for slight color deviation from the actual RAL Standard. This chart therefore can not serve as a standard for RAL color production and is to be used as a guide for color planning and specification only.

Standard Raynor Powdercoat Colors

Black	STBL
White	STWH
Brown	S-Br
Matte Black	MBLK
Kynar Sepia	S-KS
Kynar Beige	S-KB

Anodizing Color Equivalents

Clear Anodize	A215
Champagne	A300
Light Bronze	N/A
Medium Bronze	A302
Dark Bronze	A303
Extra Dark Bronze	A304
Black	A305

Series 38 (optional upgrade)

Highly Weather- and UV-Resistant Powder Coatings based on Super Durable TGIC Polyester for Exterior and Interior Applications

Features: Superior gloss and color retention, excellent weather resistance, good mechanical properties, superior chalk resistance, smooth flow, excellent edge coverage, good storage stability. AAMA 2604-05 conforming.

Gloss Level: All colors featured in this chart are available as standard products in smooth glossy with a gloss level of 80-90 (gloss level according to Gardner 60 deg., ASTM D 523).

Typical Applications: Garage doors in highly corrosive environments and in marine applications.

RAL colors not available: Due to pigmentation a small percentage of colors in the yellow, orange, red and purple range offer only limited UV stability and are therefore not available. More standard Series 38 products: For additional architectural mattes, glossy and metallic products please see our Series 38 Super Durable Powder Coatings brochure.

Custom colors: Custom colors not shown in this brochure can be custom made in 7 to 10 days. Due to pigmentation some colors in the yellow, orange, red and purple range offer only limited UV stability.

UV stability of custom colors in that color range must be verified by our production laboratories on a case by case basis.

Please Note:

Series 49 - Standard coating

Series 38 - Marine-grade coating is available as a special order. Contact your Raynor Dealer for special quoting.